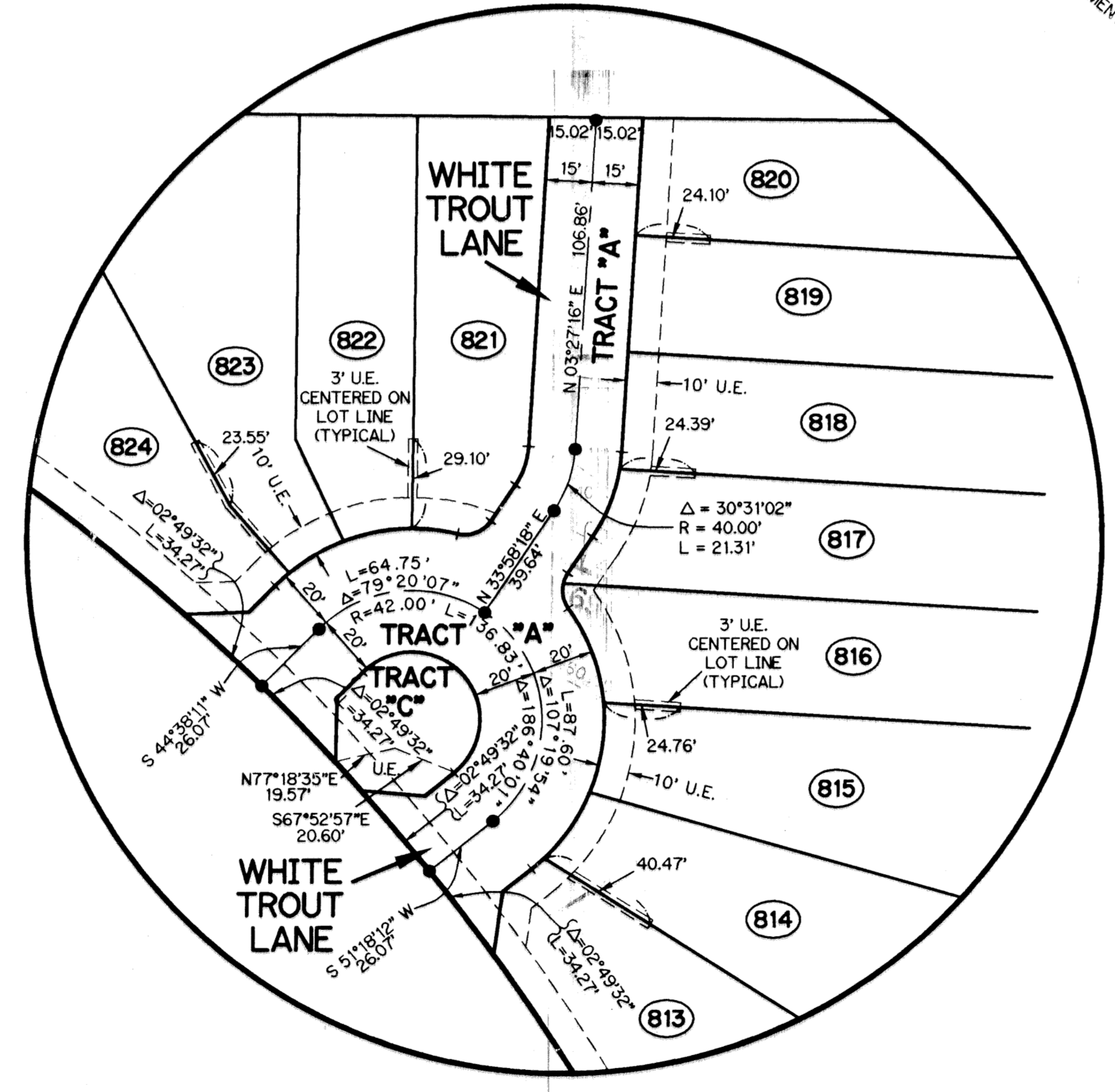
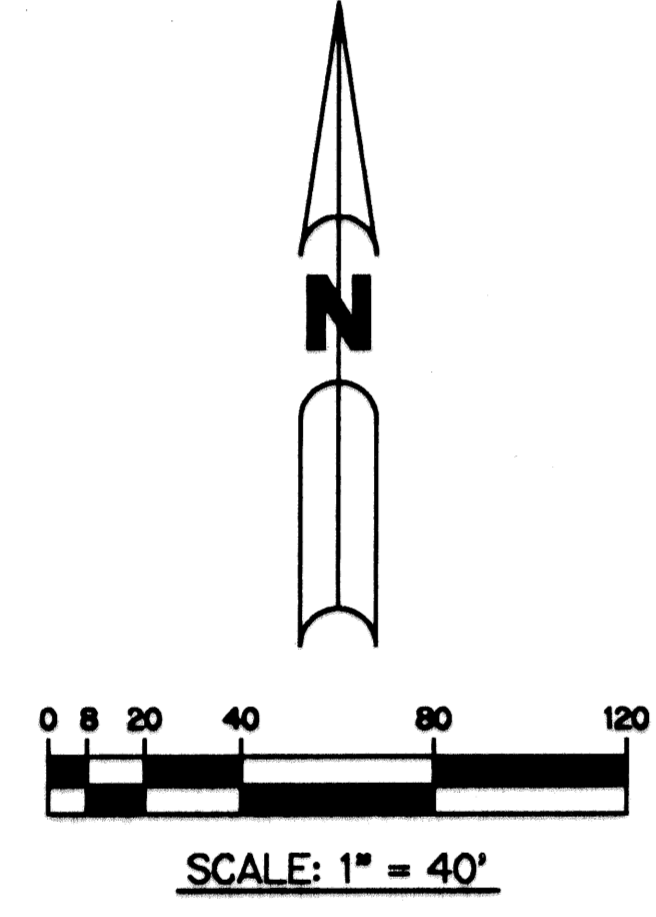


UNPLATTED

# RIVERWALK - PLAT 5

BEING A REPLAT OF CIVIC SITE OF RIVERWALK - PLAT TWO AS RECORDED IN PLAT BOOK 76, PAGES 30 THROUGH 36, INCLUSIVE, OF THE PUBLIC RECORDS OF PALM BEACH COUNTY, FLORIDA LYING IN SECTION 21, TOWNSHIP 43 SOUTH, RANGE 42 EAST, CITY OF WEST PALM BEACH, PALM BEACH COUNTY, FLORIDA.

SHEET 2 OF 2 JANUARY, 1997



TRACT "A" DETAIL  
SCALE: 1" = 40'

THIS INSTRUMENT PREPARED BY  
PERRY C. WHITE, P.S.M. 4213, STATE OF FLORIDA  
LAWSON, NOBLE AND WEBB, INC.  
ENGINEERS PLANNERS SURVEYORS  
WEST PALM BEACH, FLORIDA

- LEGEND:**
- - FOUND PERMANENT REFERENCE MONUMENT, PLS #4190
  - - FOUND PERMANENT REFERENCE POINT, PLS #4190
  - - PERMANENT REFERENCE MONUMENT, PLS #4213
  - - PERMANENT REFERENCE POINT, PLS #4213
  - △ - DELTA ANGLE
  - A - ARC LENGTH
  - B.E. - BUFFER EASEMENT
  - D.E. - DRAINAGE EASEMENT
  - L.M.A.E. - LAKE MAINTENANCE ACCESS EASEMENT
  - L.M.E. - LAKE MAINTENANCE EASEMENT
  - L.W.D.D. - LAKE WORTH DRAINAGE DISTRICT
  - N.R. - NOT RADIAL
  - N.T.S. - NOT TO SCALE
  - O.R.B. - OFFICIAL RECORD BOOK
  - P.B. - PLAT BOOK
  - PGS. - PAGES
  - P.S.M. - PROFESSIONAL SURVEYOR & MAPPER
  - R - RADIUS
  - R.E. - RIVERWALK EASEMENT
  - R/W - RIGHT-OF-WAY
  - S.T. - SURVEY TIE
  - U.E. - UTILITY EASEMENT
  - ⊗ - INDICATES COMMON LOT LINE

(ALSO AN INGRESS-EGRESS EASEMENT IN FAVOR OF THE NORTHERN PALM BEACH COUNTY IMPROVEMENT DISTRICT AND IN FAVOR OF THE CITY OF WEST PALM BEACH AND ALSO A PUBLIC UTILITY EASEMENT.)

(ALSO AN INGRESS-EGRESS EASEMENT IN FAVOR OF THE NORTHERN PALM BEACH COUNTY IMPROVEMENT DISTRICT AND IN FAVOR OF THE CITY OF WEST PALM BEACH AND ALSO A PUBLIC UTILITY EASEMENT.)

EAST LINE OF SECTION 21-43-42

JOG ROAD  
(120' RIGHT-OF-WAY)  
(WEST 60' PER O.R.B. 4812, PG. 1969)  
(EAST 60' PER O.R.B. 4783, PGS. 188 & 196)

VISTA CENTER  
OF PALM BEACH  
PLAT NO. 3  
(P.B. 68, PGS. 128-134)